


Macroblock

Preliminary Datasheet

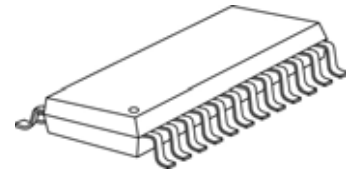
MBI5050

16-Channel PWM Constant Current LED Driver For Time-multiplexing Applications

Features

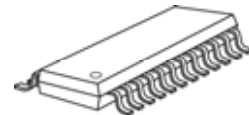
- 3V-5.5V supply voltage
- Constant output current range: 3~45mA
 - 3~45mA @ 5V supply voltage
 - 3~30mA @ 3.3V supply voltage
- Backward compatible with MBI5026 and MBI5030 in package
- 16 constant current output channels
- Built-in 4K-bit SRAM to support time-multiplexing for 1 ~ 8 scans
- 16-bit /14-bit color depth PWM control
- Scan-type Scrambled-PWM technology to improve visual refresh rate
- 6-bit programmable output current gain
- Excellent output current accuracy:
 - Between channels: $<\pm 1.5\%$ (typ.), and
 - Between ICs: $<\pm 3\%$ (typ.),
- Staggered delay of output to reduce EMI
- Maximum data clock frequency: 30MHz
- Schmitt trigger input

Small Outline Package



GF: SOP24L-236-1.00

Shrink SOP



GP: SSOP24L-150-0.64

Product Description

MBI5050 is designed for LED video applications using internal Pulse Width Modulation (PWM) control with selectable 16-bit / 14-bit color depth. MBI5050 features a 16-bit shift register which converts serial input data into each pixel's gray scale of the output port. Sixteen regulated current ports are designed to provide uniform and constant current sinks for driving LEDs with a wide range of V_F variations. The output current can be preset through an external resistor. Moreover, the preset current of MBI5050 can be further programmed to 64-step for LED global brightness adjustment.

The innovative architecture with embedded SRAM is designed to support up to 8:1 time-multiplexing applications. User only needs to send the whole frame data once and to store in the embedded SRAM of the LED driver, instead of sending every time when the scan line is changed. It helps save the data bandwidth and achieve high grayscale with very low data clock rate.

With scan-type Scrambled-PWM (S-PWM) technology, MBI5050 enhances Pulse Width Modulation by scrambling the "on" time of each scan line into several "on" periods and sequentially drives each scan line for a short "on" period. The enhancement equivalently increases the visual refresh rate of scan-type LED displays. MBI5050 drives the corresponding LEDs to the brightness specified by image data. With MBI5050, all output channels can be built with 16-bit color depth (65,536 gray scales). Each LED's brightness can be calibrated enough from minimum to maximum brightness with compensated gamma correction or LED deviation information inside the 16-bit image data. When building a 16-bit color depth video, S-PWM technology reduces the flickers and improves the image fidelity. Also, MBI5050 offloads the signal timing generation of the host controller which just needs to feed data into drivers.

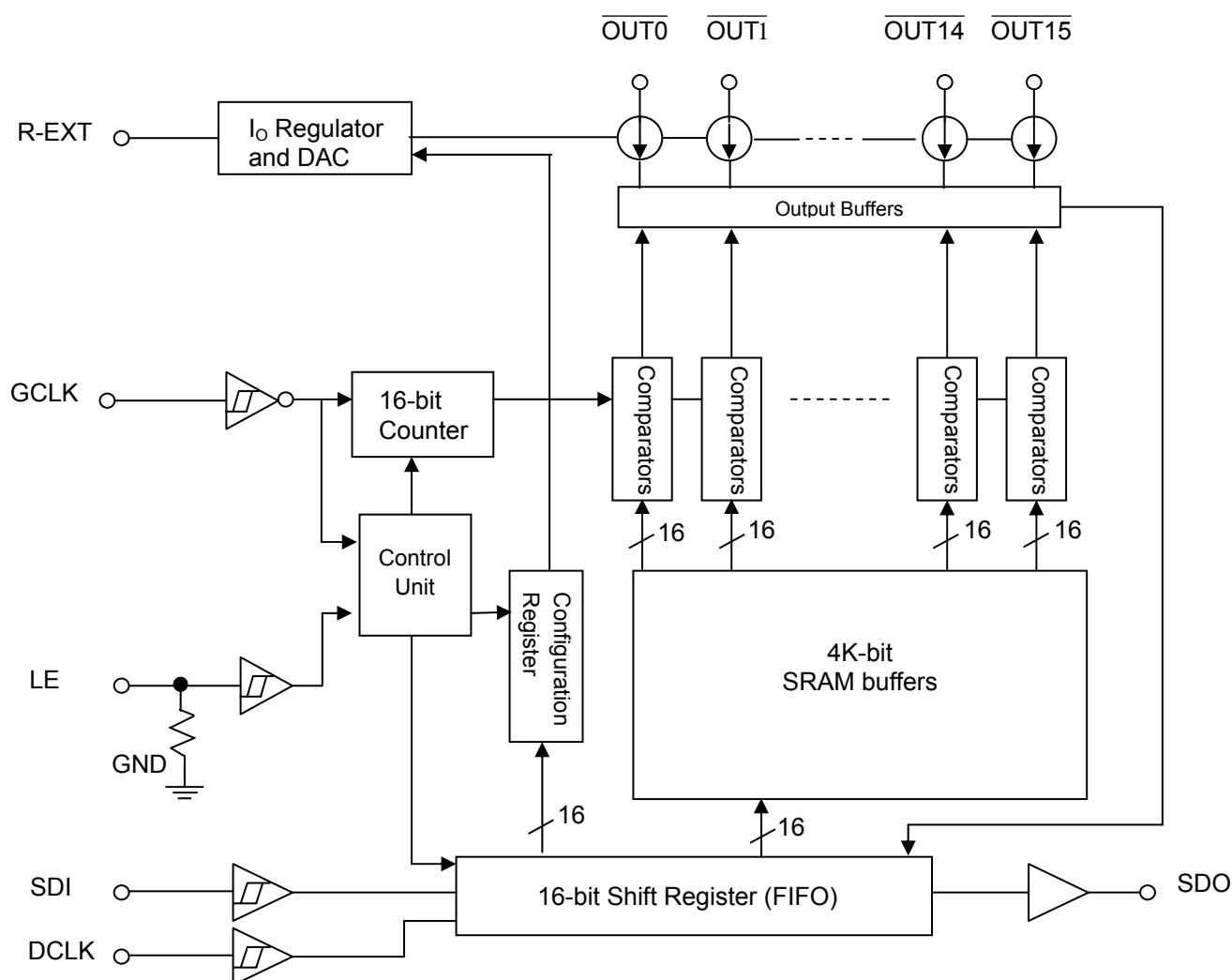
MBI5050**16-Channel PWM Constant Current LED Driver****For Time-multiplexing Applications****Block Diagram**

Figure 1

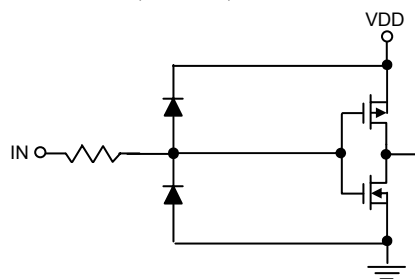
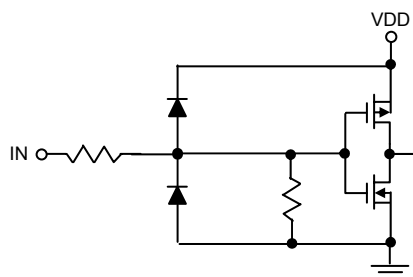
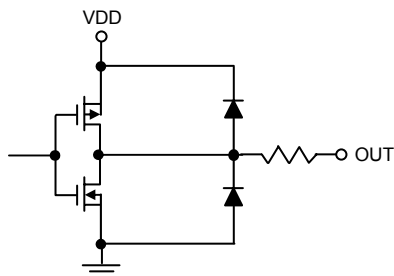
MBI5050**16-Channel PWM Constant Current LED Driver****For Time-multiplexing Applications****Pin Configuration**

GND	1	24	VDD
SDI	2	23	R-EXT
DCLK	3	22	SDO
LE	4	21	GCLK
OUT0	5	20	OUT15
OUT1	6	19	OUT14
OUT2	7	18	OUT13
OUT3	8	17	OUT12
OUT4	9	16	OUT11
OUT5	10	15	OUT10
OUT6	11	14	OUT9
OUT7	12	13	OUT8

MBI5050GF/GP

Terminal Description

Pin Name	Function
GND	Ground terminal for control logic and current sink
SDI	Serial-data input to the shift register
DCLK	Clock input terminal used to shift data on rising edge and carries command information when LE is asserted.
LE	Data strobe terminal and controlling command with DCLK
OUT0 ~ OUT15	Constant current output terminals
GCLK	Gray scale clock terminal Clock input for gray scale. The gray scale display is counted by gray scale clock comparing with input data.
SDO	Serial-data output to the receiver-end SDI of next LED driver
R-EXT	Input terminal used to connect an external resistor for setting up output current for all output channels
VDD	3.3V/5V supply voltage terminal

MBI5050**16-Channel PWM Constant Current LED Driver****For Time-multiplexing Applications****Equivalent Circuits of Inputs and Outputs****GCLK, DCLK, SDI terminal****LE Terminal****SDO Terminal**

MBI5050 16-Channel PWM Constant Current LED Driver

For Time-multiplexing Applications

Maximum Rating

Characteristic		Symbol	Rating	Unit
Supply Voltage		V_{DD}	0~7	V
Input Pin Voltage (SDI)		V_{IN}	-0.4~ $V_{DD}+0.4$	V
Sustaining Voltage at OUT Port		V_{DS}	-0.5~17	V
Output Current		I_{OUT}	+45	mA
GND Terminal Current		I_{GND}	720	mA
Power Dissipation (On 4 Layer PCB, $T_a=25^{\circ}\text{C}$)*	GF Type	P_D	1.87	W
	GP Type		1.79	
Thermal Resistance (On 4 Layer PCB, $T_a=25^{\circ}\text{C}$)*	GF Type	$R_{th(j-a)}$	66.69	$^{\circ}\text{C/W}$
	GP Type		69.5	
Junction Temperature		$T_{j,max}$	150**	$^{\circ}\text{C}$
Operating Temperature		T_{opr}	-40~+85	$^{\circ}\text{C}$
Storage Temperature		T_{stg}	-55~+150	$^{\circ}\text{C}$

*The PCB size is 76.2mm*114.3mm in simulation. Please refer to JEDEC JESD51.

Note: The performance of thermal dissipation is strongly related to the size of thermal pad, thickness and layer numbers of the PCB. The empirical thermal resistance may be different from simulative value. User should plan for expected thermal dissipation performance by selecting package and arranging layout of the PCB to maximize the capability.

** Operation at the maximum rating for extended periods may reduce the device reliability; therefore, the suggested operation temperature of the device is under 125°C.

MBI5050**16-Channel PWM Constant Current LED Driver****For Time-multiplexing Applications**Electrical Characteristics ($V_{DD}=5.0V$, $T_a=25^{\circ}C$)

Characteristics		Symbol	Condition		Min.	Typ.	Max.	Unit
Supply Voltage		V _{DD}	-		4.5	5.0	5.5	V
Sustaining Voltage at OUT Ports		V _{DS}	$\overline{OUT0} \sim \overline{OUT15}$		-	-	17.0	V
Output Current		I _{OUT}	Refer to “Test Circuit for Electrical Characteristics”		3	-	45	mA
		I _{OH}	SDO		-	-	-1.0	mA
		I _{OL}	SDO		-	-	1.0	mA
Input Voltage	“H” level	V _{IH}	Ta=-40~85°C		0.7xV _{DD}	-	V _{DD}	V
	“L” level	V _{IL}	Ta=-40~85°C		GND	-	0.3xV _{DD}	V
Output Leakage Current		I _{OH}	V _{DS} =17.0V		-	-	0.5	μA
Output Voltage	SDO	V _{OH}	I _{OH} =-1.0mA		4.6	-	-	V
		V _{OL}	I _{OL} =+1.0mA		-	-	0.4	V
Current Skew (Channel)		dI _{OUT}	I _{OUT} =25mA V _{DS} =1.0V	R _{ext} =560Ω	-	±1.5	±3.0	%
Current Skew (IC)		dI _{OUT2}	I _{OUT} =25mA V _{DS} =1.0V	R _{ext} =560Ω	-	±3.0	±6.0	%
Output Current vs. Output Voltage Regulation*		%/dV _{DS}	V _{DS} within 1.0V and 3.0V, R _{ext} =560Ω@25mA		-	±0.1	±0.5	% / V
Output Current vs. Supply Voltage Regulation*		%/dV _{DD}	V _{DD} within 4.5V and 5.5V		-	±1.0	±2.0	% / V
Pull-down Resistor		R _{IN} (down)	LE		250	450	800	KΩ
Supply Current	“Off” (SDI=DCLK=GCLK=0Hz)	I _{DD} (off) 1	R _{ext} =Open, $\overline{OUT0} \sim \overline{OUT15}$ =Off		-	3.4	6.0	mA
		I _{DD} (off) 2	R _{ext} =560Ω, $\overline{OUT0} \sim \overline{OUT15}$ =Off		-	7.7	12	
		I _{DD} (off) 3	R _{ext} =360Ω, $\overline{OUT0} \sim \overline{OUT15}$ =Off		-	9.7	15	
	“On” (SDI=10MHz, DCLK=GCLK=20MHz)	I _{DD} (on) 1	R _{ext} =560Ω, $\overline{OUT0} \sim \overline{OUT15}$ =On		-	7.8	15	
		I _{DD} (on) 2	R _{ext} =360Ω, $\overline{OUT0} \sim \overline{OUT15}$ =On		-	9.8	20	

*One channel on.

MBI5050**16-Channel PWM Constant Current LED Driver****For Time-multiplexing Applications**Electrical Characteristics ($V_{DD}=3.3V$, $T_a=25^{\circ}C$)

Characteristics		Symbol	Condition		Min.	Typ.	Max.	Unit
Supply Voltage		V _{DD}	-		3.0	3.3	3.6	V
Sustaining Voltage at OUT Ports		V _{DS}	OUT0 ~ OUT15		-	-	17.0	V
Output Current		I _{OUT}	Refer to “Test Circuit for Electrical Characteristics”		3	-	30	mA
		I _{OH}	SDO		-	-	-1.0	mA
		I _{OL}	SDO		-	-	1.0	mA
Input Voltage	“H” level	V _{IH}	Ta=-40~85°C		0.7xV _{DD}	-	V _{DD}	V
	“L” level	V _{IL}	Ta=-40~85°C		GND	-	0.3xV _{DD}	V
Output Leakage Current		I _{OH}	V _{DS} =17.0V		-	-	0.5	μA
Output Voltage	SDO	V _{OH}	I _{OH} =-1.0mA		2.9	-	-	V
		V _{OL}	I _{OL} =+1.0mA		-	-	0.4	V
Current Skew (Channel)		dI _{OUT}	I _{OUT} =25mA V _{DS} =1.0V	R _{ext} =560Ω	-	±1.5	±3.0	%
Current Skew (IC)		dI _{OUT2}	I _{OUT} =25mA V _{DS} =1.0V	R _{ext} =560Ω	-	±3.0	±6.0	%
Output Current vs. Output Voltage Regulation*		%/dV _{DS}	V _{DS} within 1.0V and 3.0V, R _{ext} =560Ω@25mA		-	±0.1	±0.5	% / V
Output Current vs. Supply Voltage Regulation*		%/dV _{DD}	V _{DD} within 3.0V and 3.6V		-	±1.0	±2.0	% / V
Pull-down Resistor		R _{IN} (down)	LE		250	450	800	KΩ
Supply Current	“Off” (SDI=DCLK=GCLK =0Hz)	I _{DD} (off) 1	R _{ext} =Open, OUT0 ~ OUT15 =Off		-	3.2	6	mA
		I _{DD} (off) 2	R _{ext} =560Ω, OUT0 ~ OUT15 =Off		-	7.4	12	
		I _{DD} (off) 3	R _{ext} =360Ω, OUT0 ~ OUT15 =Off		-	9.4	15	
	“On” (SDI=10MHz, DCLK=GCLK=20MHz)	I _{DD} (on) 1	R _{ext} =560Ω, OUT0 ~ OUT15 =On		-	7.4	15	
		I _{DD} (on) 2	R _{ext} =360Ω, OUT0 ~ OUT15 =On		-	9.4	20	

*One channel on.

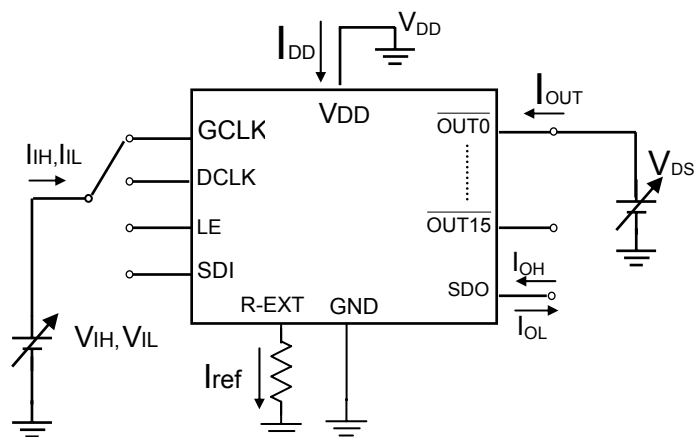
Test Circuit for Electrical Characteristics

Figure 2

MBI5050**16-Channel PWM Constant Current LED Driver****For Time-multiplexing Applications****Switching Characteristics ($V_{DD}=5.0V$)**

Characteristics		Symbol	Condition	Min.	Typ.	Max.	Unit
Setup Time	SDI - DCLK↑	t_{SU0}	$V_{IH}=V_{DD}$ $V_{IL}=GND$ $R_{ext}=680\Omega$ $V_{LED}=4.0V$ $V_{DS}=1V$ $R_L=150\Omega$ $C_L=10pF$ $C_1=100nF$ $C_2=10\mu F$ $C_{SDO}=10pF$	5	-	-	ns
	LE - DCLK↑	t_{SU1}		8	-	-	ns
	LE (Vsync)* - GCLK	t_{SU2}		7	-	-	ns
Hold Time	DCLK↑ - SDI	t_{H0}		6	-	-	ns
	DCLK↑ - LE	t_{H1}		8	-	-	ns
	GCLK - LE (Vsync)*	t_{H2}		7	-	-	ns
Propagation Delay Time	DCLK - SDO	t_{PD0}		-	25	33	ns
	GCLK - $\overline{OUT4n}$ **	t_{PD1}		-	35	-	ns
Staggered Delay of Output	$\overline{OUT4n+1}$ ***	t_{DL1}		-	5	-	ns
	$\overline{OUT4n+2}$ ***	t_{DL2}		-	10	-	ns
	$\overline{OUT4n+3}$ ***	t_{DL3}		-	15	-	ns
Data Clock Frequency		F_{DCLK}		-	-	30	MHz
Gray Scale Clock Frequency****		F_{GCLK}		-	-	33	MHz
Min. Clock(GCLK or DCLK) Pulse Width		$t_{W(CLK)}$		10	-	-	ns
Ratio of (GCLK freq)/(DCLK freq)		$R_{(GCLK/DCLK)}$		20	-	-	%
Output Rise Time of Output Ports		t_{OR}		-	15	-	ns
Output Fall Time of Output Ports		t_{OF}		-	15	-	ns

* Vsync refers to "Vertical Sync" command. More details can be referred to P14.

**Output waveforms have good uniformity among channels.

***Refer to the Timing Waveform, where $n=0, 1, 2, 3$.

****With uniform output current.

MBI5050**16-Channel PWM Constant Current LED Driver****For Time-multiplexing Applications****Switching Characteristics ($V_{DD}=3.3V$)**

Characteristics		Symbol	Condition	Min.	Typ.	Max.	Unit
Setup Time	SDI - DCLK↑	t_{SU0}	$V_{IH}=V_{DD}$ $V_{IL}=GND$ $R_{ext}=680\Omega$ $V_{LED}=4.0V$ $V_{DS}=1V$ $R_L=150\Omega$ $C_L=10pF$ $C_1=100nF$ $C_2=10\mu F$ $C_{SDO}=10pF$	7	-	-	ns
	LE - DCLK↑	t_{SU1}		10	-	-	ns
	LE (Vsync)* - GCLK	t_{SU2}		10	-	-	ns
Hold Time	DCLK↑ - SDI	t_{H0}		8	-	-	ns
	DCLK↑ - LE	t_{H1}		10	-	-	ns
	GCLK - LE (Vsync)*	t_{H2}		10	-	-	ns
Propagation Delay Time	DCLK - SDO	t_{PD0}		-	30	40	ns
	GCLK - $\overline{OUT4n}^{**}$	t_{PD1}		-	45	-	ns
Staggered Delay of Output	$\overline{OUT4n+1}^{***}$	t_{DL1}		-	5	-	ns
	$\overline{OUT4n+2}^{***}$	t_{DL2}		-	10	-	ns
	$\overline{OUT4n+3}^{***}$	t_{DL3}		-	15	-	ns
Data Clock Frequency		F_{DCLK}		-	-	25	MHz
Gray Scale Clock Frequency****		F_{GCLK}		-	-	20	MHz
Min. Clock(GCLK or DCLK) Pulse Width		$t_{W(CLK)}$		12	-	-	ns
Ratio of (GCLK freq)/(DCLK freq)		$R_{(GCLK/DCLK)}$		20	-	-	%
Output Rise Time of Output Ports		t_{OR}		-	25	-	ns
Output Fall Time of Output Ports		t_{OF}		-	25	-	ns

* Vsync refers to "Vertical Sync" command. More details can be referred to P14.

**Output waveforms have good uniformity among channels.

***Refer to the Timing Waveform, where $n=0, 1, 2, 3$.

****With uniform output current.

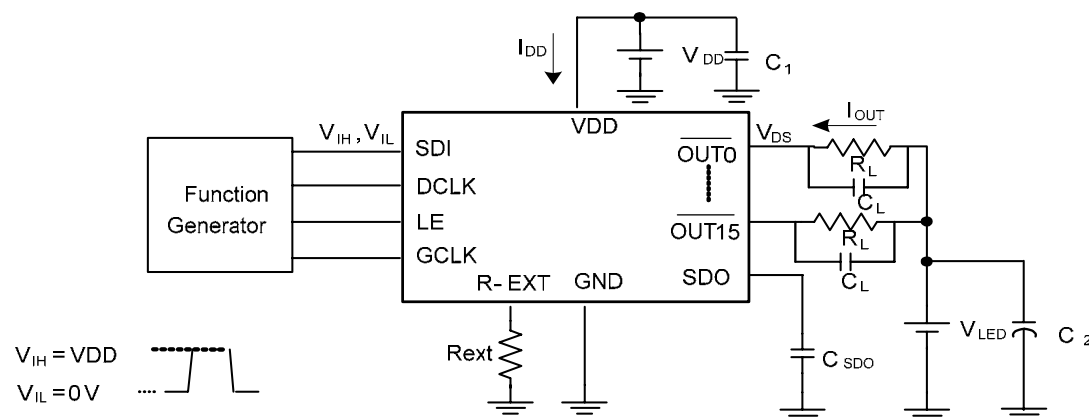
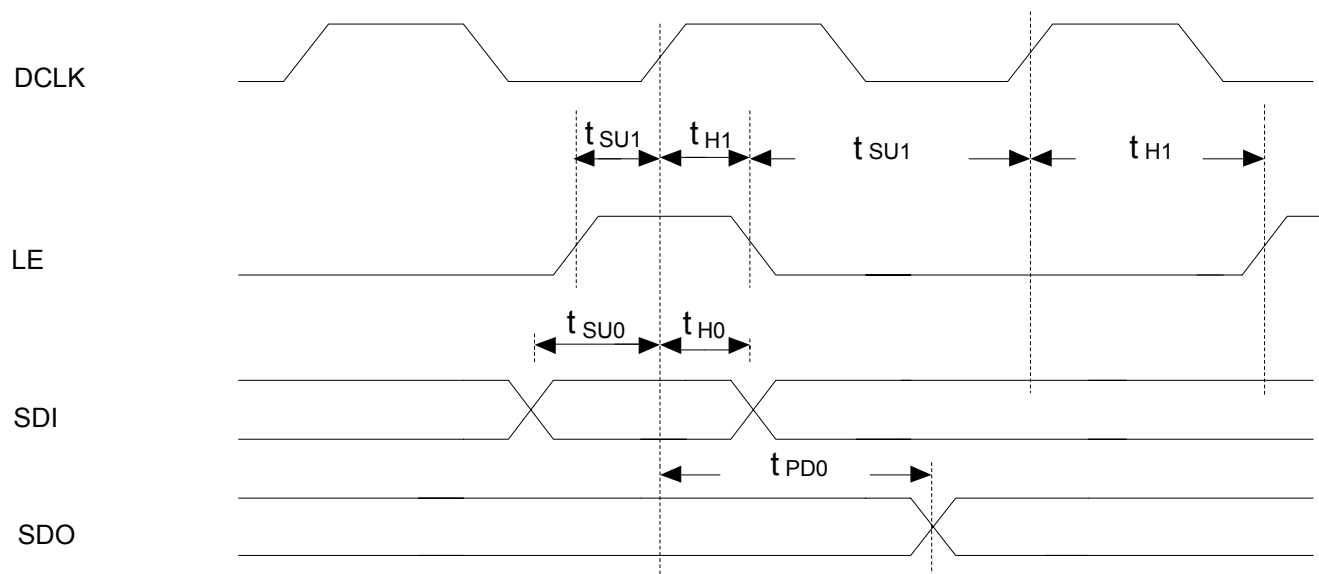
Test Circuit for Switching Characteristics

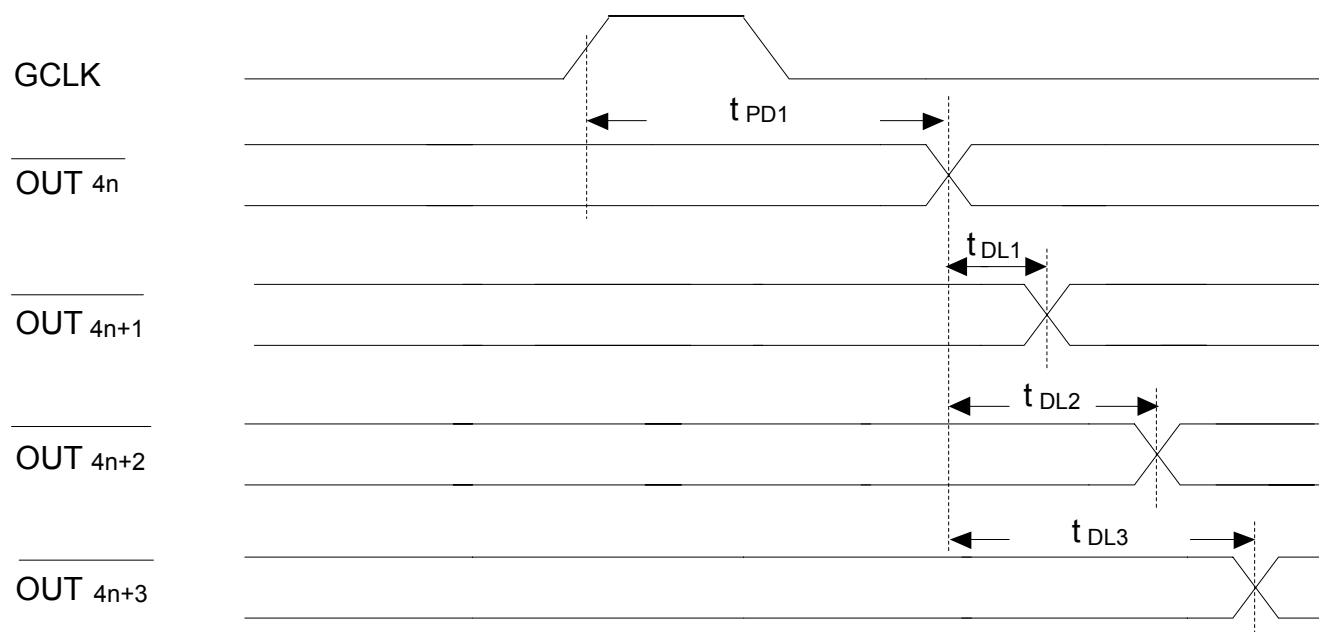
Figure 3

MBI5050**16-Channel PWM Constant Current LED Driver****For Time-multiplexing Applications****Timing Waveform**

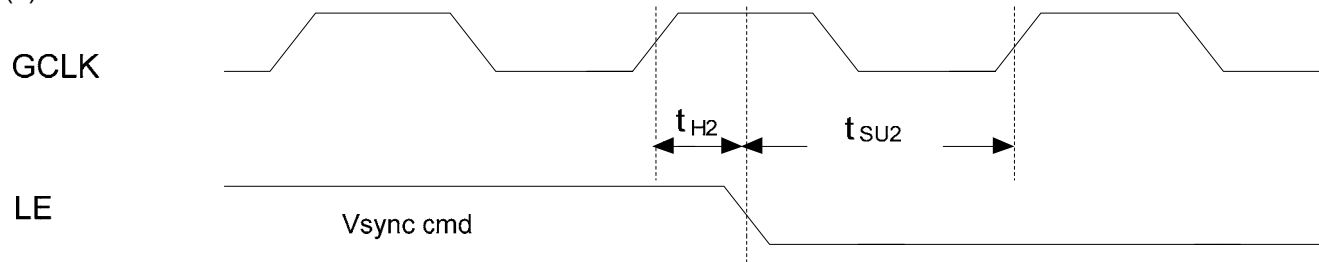
(1)



(2)

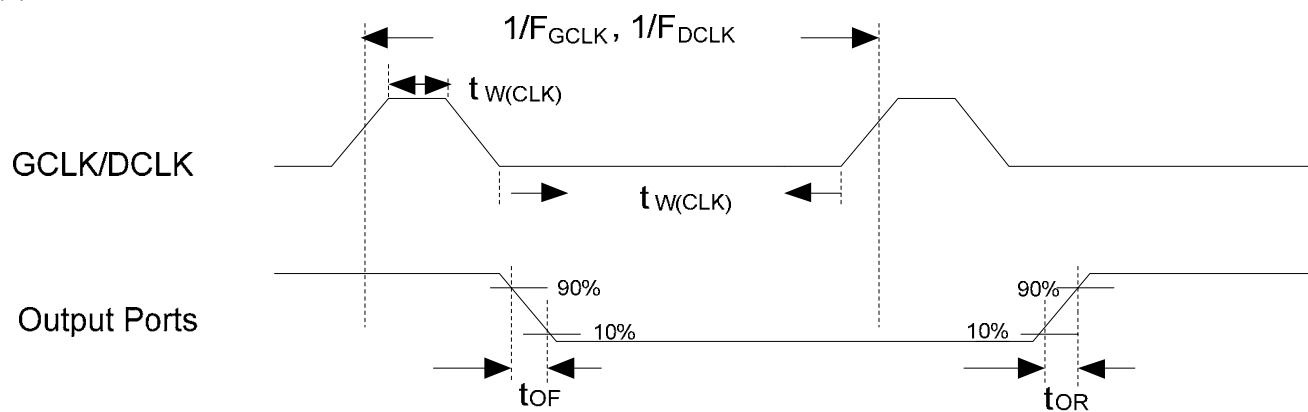


(3)



MBI5050**16-Channel PWM Constant Current LED Driver****For Time-multiplexing Applications**

(4)



MBI5050**16-Channel PWM Constant Current LED Driver****For Time-multiplexing Applications****Control Command**

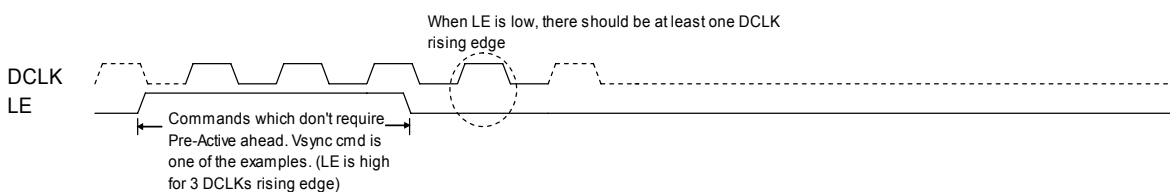
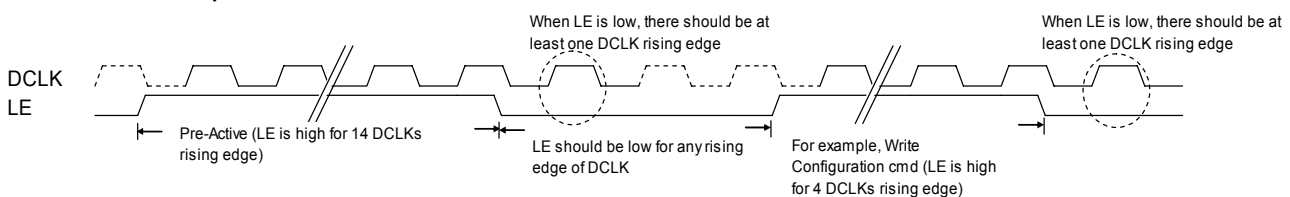
Command Name	Signals Combination		Description
	LE	Number of DCLK Rising Edge when LE is asserted	Action of Command
Data Latch	High	1	Serial data are transferred to the input data buffers
Vsync	High	3	Vertical Synchronal signal. Display frame will be updated to output channel
Write Configuration*	High	4	Serial data are written to the configuration register
Read Configuration	High	5	Serial data are read from the configuration register
Software Reset	High	10	Reset the behavior of MBI5050 except the configuration registers value
Enable All Outputs*	High	11	All 16 channels are turned-on
Disable All Outputs*	High	12	All 16 channels are turned-off
Pre-Active	High	14	Pre-Active command needs to be sent before "Write Configuration", "Enable All Outputs", and "Disable All Outputs" commands.

*Those commands can only be activated after Pre-Active command; otherwise, they will be invalid.

Note:

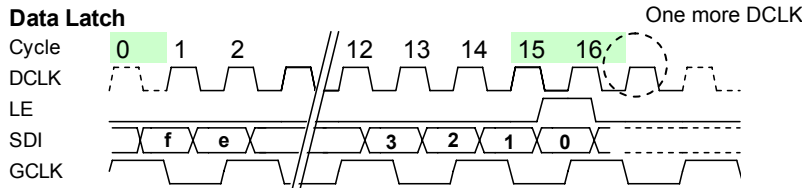
- When the power is on, Vsync command will be valid only after 16 times of "Data Latch" commands have been sent in advance.
- "Enable All Outputs" and "Disable All Outputs" commands will be disabled after receiving Data Latch command.

The following figures show the waveforms of commands which require or don't require "Pre-Active" ahead.

Commands which don't require Pre-Active ahead**Commands which require Pre-Active ahead**

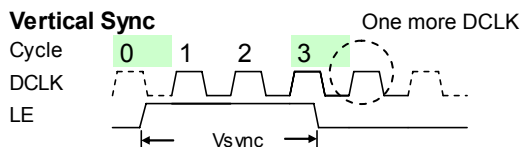
MBI5050**16-Channel PWM Constant Current LED Driver****For Time-multiplexing Applications****Waveform of Commands**

The following figures show the waveform of each command. For every command, there must be at least one more DCLK after LE goes low.



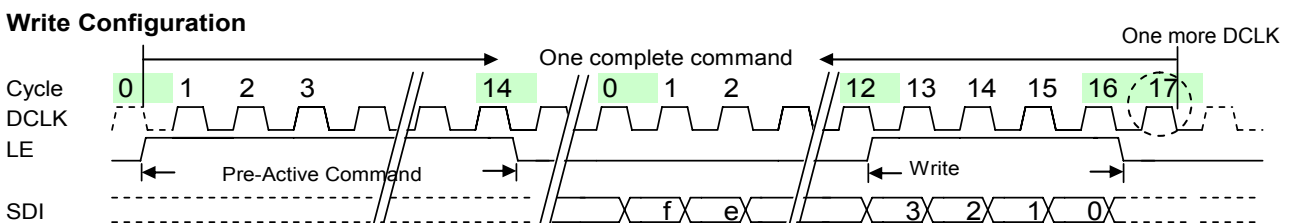
Data Latch command is used to latch the 16-bit shift register from SDI to internal SRAM buffer. When this command is received, the last 16 bits data before the falling edge of LE will be latched into SRAM, as shown in the above waveform, and MSB bit needs to be sent first.

Note: GCLK can not stop during this command. Ratio of GCLK frequency and DCLK frequency should be 20%.

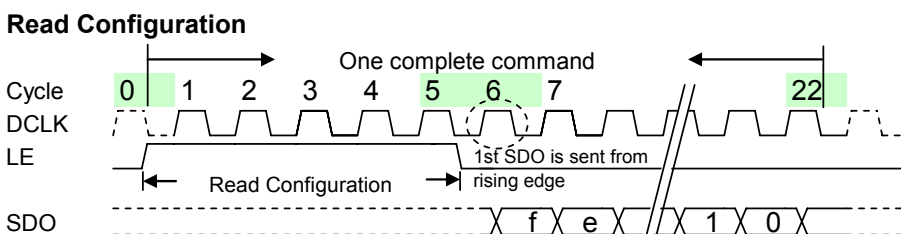


“Vsync” command is used to update frame data on output channels (OUT0 ~OUT15). There are some timing limitations between signal “LE” and “GCLK”; and please refer to the section of “Vsync Command Operation” for details.

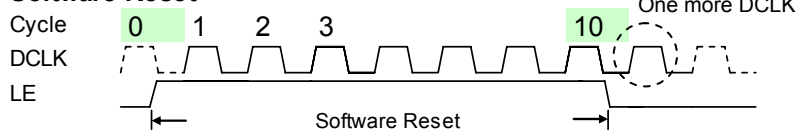
Note: The extra DCLK after LE goes low is required for GCLK = DCLK mode. Please refer to “Vsync Command Operation” for detailed information.



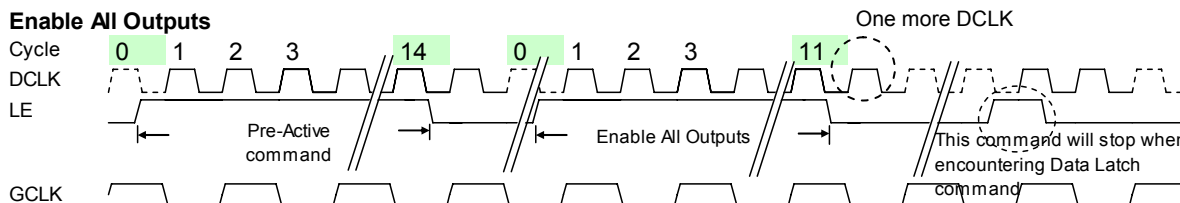
“Write configuration” command is used to program the configuration register of MBI5050. The “Pre-Active” command must be sent in advance. When this command is received, the last 16 bits data before the falling edge of LE will be latched into configuration register, as shown in the above waveform, and MSB bit needs to be sent first.



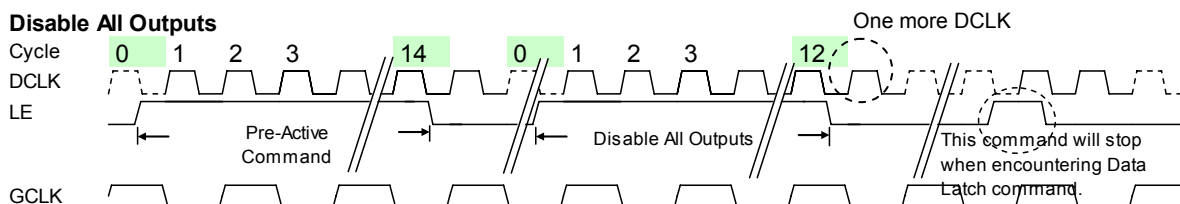
“Read configuration” command is used to read the configuration register of MBI5050. When this command is received, the 16-bit data of configuration register will be shifted out from SDO pin, as shown in the above waveform, and MSB bit will be shifted out first.

MBI5050**16-Channel PWM Constant Current LED Driver****For Time-multiplexing Applications****Software Reset**

"Software reset" command makes MBI5050 go back to the initial state except configuration register value. After this command is received, the output channels will be turned off and will display again with last gray-scale value after new "Vsync" command is received.

Enable All Outputs

"Enable all output" command will turn on all output channels. The "Pre-Active" command must be sent in advance, and GCLK can not stop during this command. This command will stop when encountering "Data Latch" command. Ratio of GCLK frequency and DCLK frequency should be 20%.

Disable All Outputs

"Disable all output" command will turn off all output channels. The "Pre-Active" command must be sent in advance, and GCLK can not stop during this command. This command will stop when encountering "Data Latch" command. Ratio of GCLK frequency and DCLK frequency should be 20%.

MBI5050**16-Channel PWM Constant Current LED Driver****For Time-multiplexing Applications****Definition of Configuration Register**

MSB

LSB

F	E	D	C	B	A	9	8	7	6	5	4	3	2	1	0
---	---	---	---	---	---	---	---	---	---	---	---	---	---	---	---

e.g. Default Value

F	E	D	C	B	A	9	8	7	6	5	4	3	2	1	0
0	0	0	0	0	0	1	1	0	0	6'b101011					

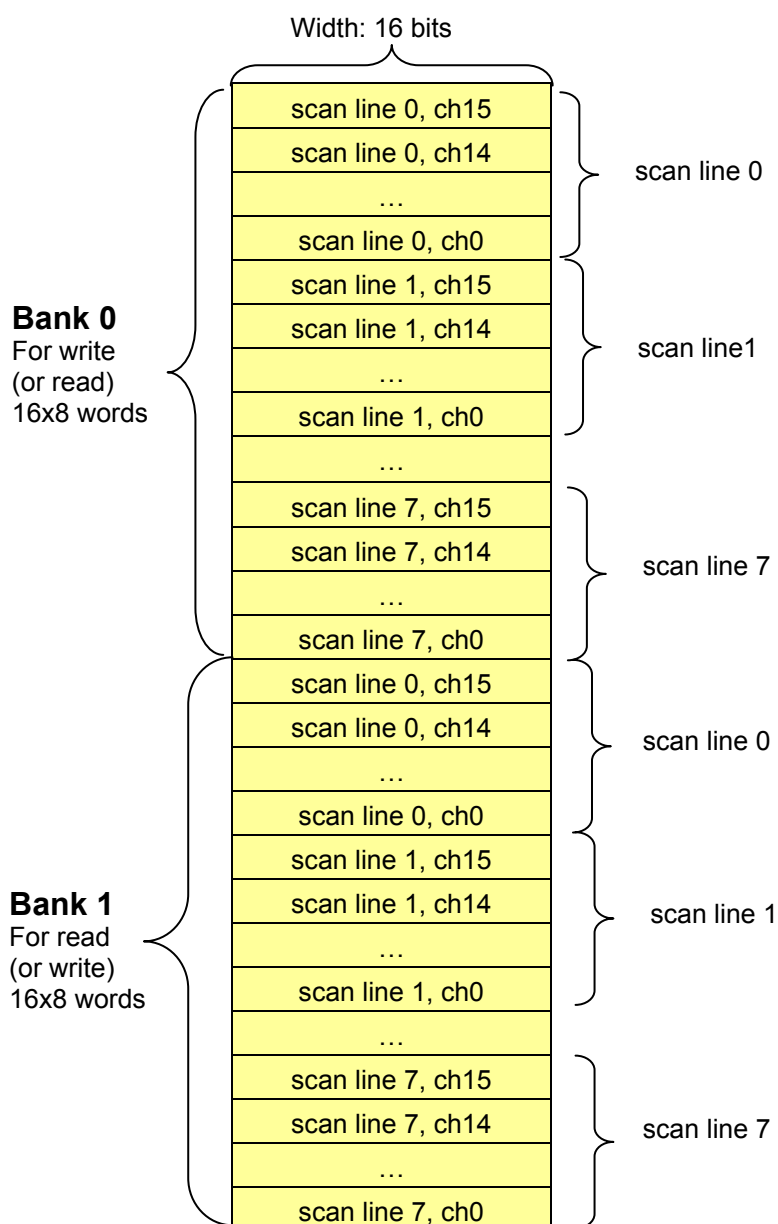
Default setting of configuration register is 16'h032B

Bit	Attribute	Definition	Value	Function
F	Read/Write	Reserved	0 (Default)	Reserved. Please set "0".
E	Read/Write	Reserved	0 (Default)	Reserved. Please set "0".
D	Read/Write	GCLK source	0 (Default)	GCLK sent by user
			1	Set GCLK=DCLK. Use DCLK to be the source of GCLK.
C	Read/Write	Gray scale mode	0 (Default)	16-bit gray scale mode. The 65,536 GCLKs (16-bit) PWM cycle is divided into 64 sections. Each section has 1,024 GCLKs.
			1	14-bit gray scale mode. The 16,384 GCLKs (14-bit) PWM cycle is divided into 16 sections. Each section has 1,024 GCLKs. User should still send 16-bit data with 2-bit 0 in LSB bits. e.g. {14'h1234, 2'h0}.
B	Read/Write	Reserved	0 (Default)	Reserved. Please set "0".
A~8	Read/Write	Number of scan lines	000 001 010 011 (Default) ~ 111	000: 1 scan line 001: 2 scan lines 010: 3 scan lines 011: 4 scan lines 100: 5 scan lines 101: 6 scan lines 110: 7 scan lines 111: 8 scan lines
7~6	Read/Write	Reserved	00(Default)	Reserved. Please set "0".
5~0	Read/Write	Current gain adjustment	000000~ 111111	6'b101011 (Default) Allow 64-step programmable current gain from 12.5 % to 200%

MBI5050**16-Channel PWM Constant Current LED Driver****For Time-multiplexing Applications****Memory Structure**

The gray scale data is stored in a 4K-bit SRAM. The SRAM has two banks for interleaving reading and writing data frame. The sequence of writing and reading data starts from scan line 0, channel 15. After Vsync command, the SRAM will be switched the bank for reading and writing.

Since the SRAM is composed of two-bank structure, users can send the gray scale data of next frame while current frame is displaying. MBI5050 will scramble the data frame from SRAM repeatedly with S-PWM technique to increase the visual refresh rate.



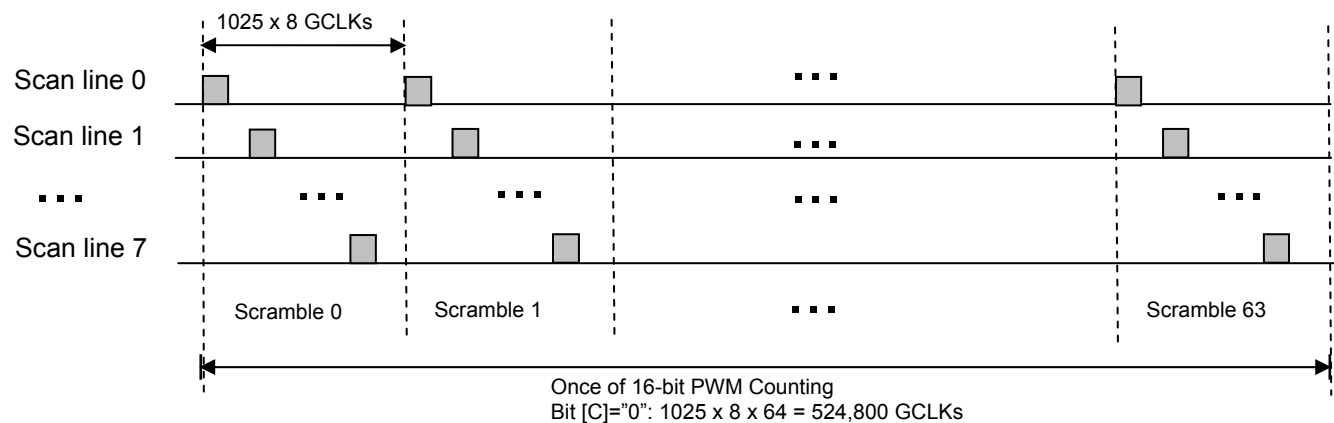
MBI5050**16-Channel PWM Constant Current LED Driver****For Time-multiplexing Applications****Number of Scan Line**

MBI5050 supports 1 to 8 scan lines. Please set the configuration register bit [A:8] according to the application. The default value '011' is 4 scan lines.

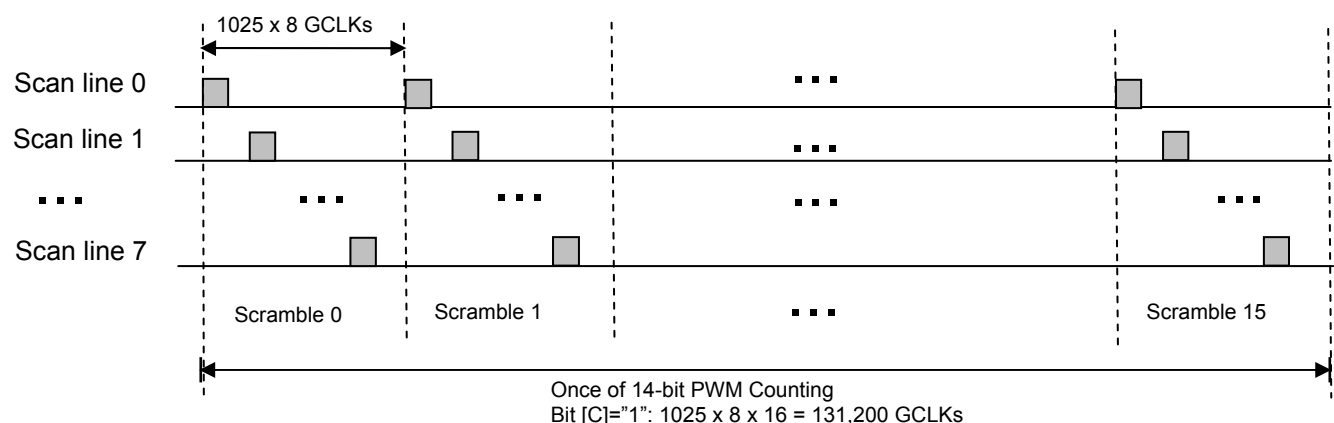
Gray Scale Mode and Scan-type S-PWM

MBI5050 provides a selectable 16-bit or 14-bit gray scale by setting the configuration register bit [C]. The default value is set to '0' for 16-bit color depth. In 14-bit gray scale mode, users should still send 16-bit data with 2-bit '0' in LSB bits. For example, {14'h1234, 2'h0}.

Configuration register bit [C] also decides the S-PWM mode for scan type. MBI5050 has a smart S-PWM technology for scan type. With S-PWM, the total PWM cycles can be broken into MSB (Most Significant Bits) and LSB (Least Significant Bits) of gray scale cycles. The MSB information can be broken down into many refresh cycles to achieve overall same high bit resolution.

Display sequence of 64 scrambles

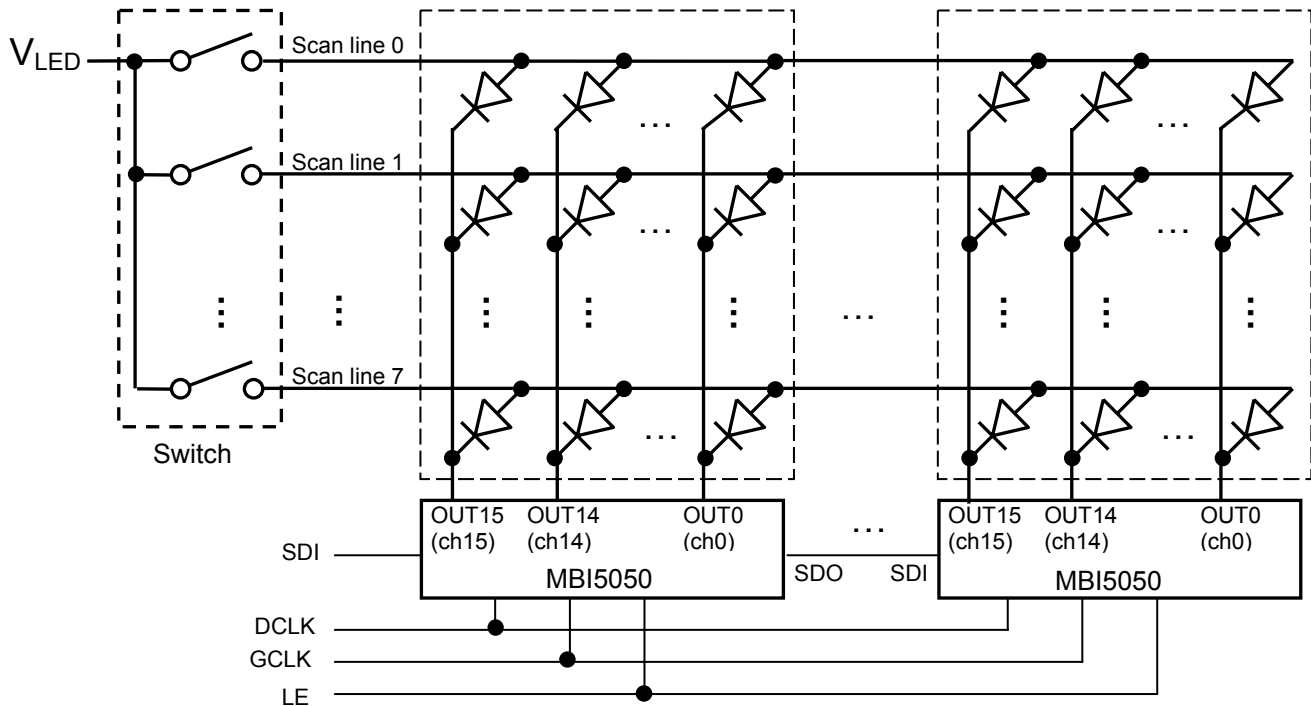
■ : Output ports are turned "on".

Display sequence of 16 scrambles

■ : Output ports are turned "on".

GCLK Source

Users could choose GCLK source by setting the configuration register bit [D]. The default value is '0' that GCLK is controlled by users. The GCLK tracing on PCB could be saved by choosing GCLK=DCLK.

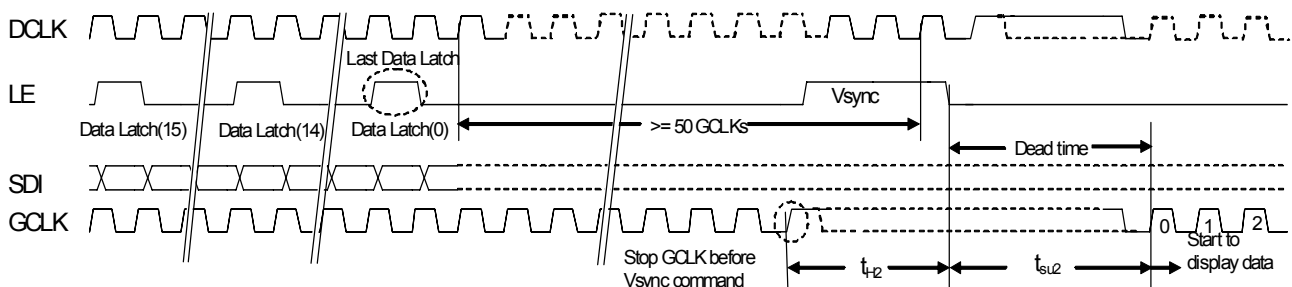
MBI5050**16-Channel PWM Constant Current LED Driver****For Time-multiplexing Applications****Operation Principal****Scan type application structure**

The above figure shows the suggested application structure of scan type scheme with 8 scan lines. The gray-scale data are sent by pin “SDI and SDO” with the commands formed by pin “LE” and “DCLK”. The output ports from 16 channels ($\overline{\text{OUT0}} \sim \overline{\text{OUT15}}$) will output the PWM result for each scan line at different time, so there must be one “Switch” to multiplex for each scan line. The switching sequence and method and the command usage will be described in the following section.

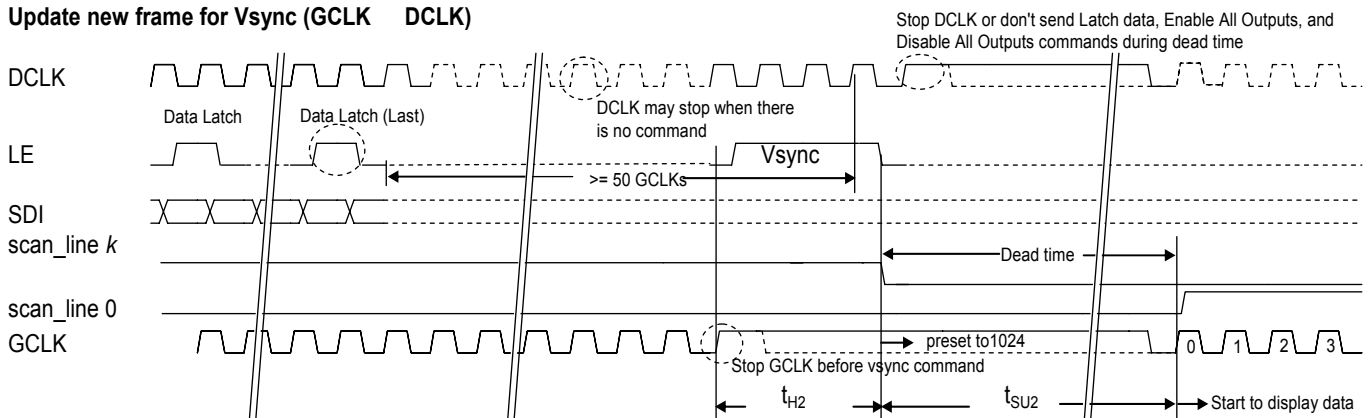
MBI5050**16-Channel PWM Constant Current LED Driver****For Time-multiplexing Applications****Initialization Sequence**

At initialization, users need to program the configuration register, if the default value of the register is not what they want. Then, the users need to send the gray scale data by the number of “Data Latch” commands (16 x number of scan lines), and then send one Vsync command to start to display.

For the initial sequence, users should only send Vsync command after 50 GCLKs of the last “Data Latch” command as shown in the below waveform. The display data will not start until first Vsync command is ready. The GCLK must be stopped before Vsync command is set, and there are some timing limitations which will be described in detail in the following section.

Start to display data for initial case**Vsync Command Operation**

“Vsync” command is set when users want to update the image frame. Below waveforms show the Vsync command to update the frame, when GCLK is independent of or equal to DCLK.

If GCLK ≠ DCLK:**Update new frame for Vsync (GCLK DCLK)**

There are limitations for users to follow:

- Since the gray scale data needs time to pre-read from SRAM to internal display buffer after last Data Latch command, there should be at least 50 GCLKs before the Vsync command is sent
Note: More details about SRAM memory structure can be referred to the section of Memory Structure.
- It is suggested for controller to keep one GCLK counter (from 0~1024), which will preset to 1024 at the falling edge of LE of Vsync command and restart from 0 at next GCLK.
- Since Vsync is the LE clock domain, there is a timing limitation between LE and GCLK. The GCLK should stop before Vsync command is sent. The setup and hold time between LE's falling edge and GCLK's rising edge must meet the t_{SU2} and t_{H2} , respectively.

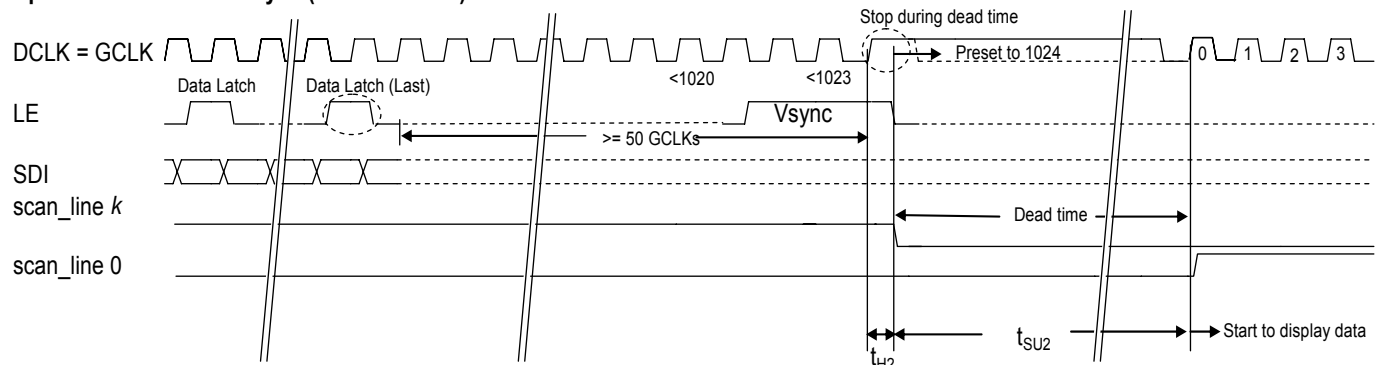
MBI5050**16-Channel PWM Constant Current LED Driver****For Time-multiplexing Applications**

- d.) The GCLK also needs to stop for dead time. The dead time is the time interval between scan lines, and is controlled by stopping GCLK. When Vsync command is set, the frame will be updated. The scan line needs to be switched (by controller) from scan line k to scan line 0, too.
- e.) DCLK can either stop or not when there is no command.
- f.) During dead time, user needs to either stop DCLK or cannot send "Data Latch", "Enable All Outputs", and "Disable All Outputs" commands.
- g.) The new data will be loaded to internal display buffer at Vsync command. But it will start to display after dead time is finished.

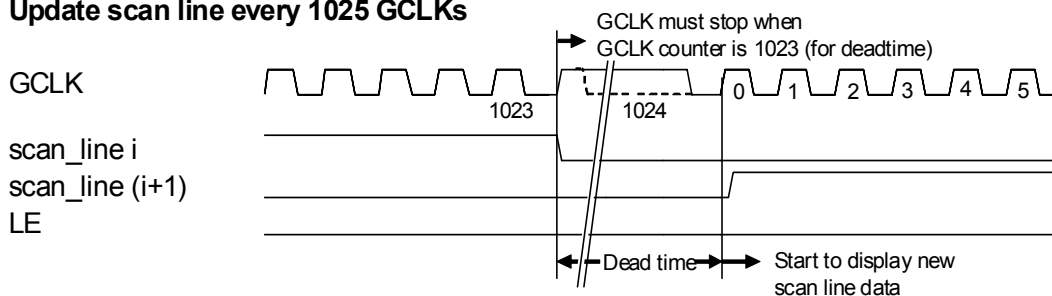
MBI5050**16-Channel PWM Constant Current LED Driver****For Time-multiplexing Applications****If GCLK = DCLK**

The control behavior is a little different from above:

- The DCLK cannot stop after finishing sending command due to DCLK also acts as GCLK.
- The DCLK needs to stop after finishing sending Vsync command for dead time. Of course, the setup and hold time between LE's falling edge and GCLK's rising edge must meet the t_{SU2} and t_{H2} , too.
- The stop point of DCLK for Vsync command can only be set before GCLK counter is < 1023 .

Update new frame for Vsync (GCLK = DCLK)**Switch Scan Line Inside Each Frame**

For the control of scan line switch, users should count in the same way of MBI5050's GCLK counter and switch each scan line when MBI5050 GCLK counter counts to 1023, and please refer to the section of Gray Scale Mode and Scan-type S-PWM for the multiplexing sequence. The dead time is controlled by stopping GCLK. MBI5050 will turn off output channels when GCLK counter value equals to 1024 during dead time.

Update scan line every 1025 GCLKs**Summary**

The control sequence is described as below:

- Users program the configuration register by "Write Configuration" command.
- Users send gray scale data by the number of "Data Latch" commands (16 x number of scan lines).
- After last "Data Latch" command, users must wait for more than 50 GCLKs before sending Vsync command. If it is not the first frame, users should send Vsync command according to the frame rate. For example, if the frame rate is 60, users should wait for 1/60 seconds. When users send Vsync command, the related timing limitations must be followed.
- When users send Vsync command, the scan line needs to start to count from 0. GCLK counter needs to be pre-set to 1024 and stops GCLK for dead time.
- During the frame display period, users need to keep one GCLK counter (0~1024) and switch scan line and insert dead time (by stopping GCLK) when GCLK counter counts to 1023.

MBI5050**16-Channel PWM Constant Current LED Driver****For Time-multiplexing Applications**

6. The gray scale data of the next frame may be sent after Vsync command is sent.

Visual Refresh Rate

In 16-bit S-PWM mode, the visual refresh rate will be improved by 64x, if the data is 64.

In 14-bit S-PWM mode, the visual refresh rate will be improved by 16x, if the data is 16.

The formula of visual refresh rate is:

Visual refresh rate = GCLK frequency / [(1024 GCLK + dead time) x number of scan lines]

For example, if there are 4 scan lines with 16-bit scan-type S-PWM, the GCLK frequency is 10MHz. The dead time is 10 GCLK periods. Then the visual refresh rate could be calculated as below:

Visual refresh rate = 10MHz / [(1024+10) x 4] = 2418Hz.

Data Input Sequence

The sequence of input data starts from scan line 0 first, and then scan line 1 ,and son on.

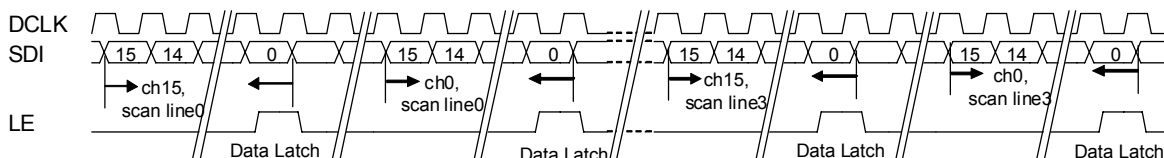
During each scan line, gray-scale data of channel 15 needs to be sent first, and then channel 14, continuously to channel 0.

Please refer to the section of scan type application structure for scan type scheme.

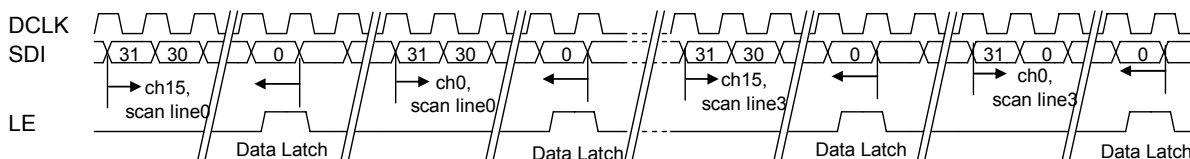
The following examples are the waveforms with 1 LED driver and 2 cascaded LED drivers respectively.

1x IC, 4 scan lines

For only one LED driver used, there are 16 bits for each channel, and note that MSB bit is sent first.

1xIC, 4 scan lines**2x ICs, 4 scan lines**

For two LED drivers cascaded, there are 16 bits for each LED driver, so there are 32 bits for each channels, first 16 bits (bit31 ~ bit16) is for 2nd LED driver, and last 16 bits (bit15 ~ bit0) is for 1st LED driver, note that MSB bit is sent first, too.

2xICs, 4 scan lines

MBI5050 16-Channel PWM Constant Current LED Driver

For Time-multiplexing Applications

Constant Current

In LED display application, MBI5050 provides nearly no variation in current from channel to channel and from IC to IC. This can be achieved by:

- 1) The typical current variation between channels is less than 1.5%, and that between ICs is less than $\pm 3\%$.
- 2) In addition, the current characteristic of output stage is flat and user can refer to the figure below. The output current can be kept constant regardless of the variations of LED forward voltages (V_F). This guarantees LED to be performed on the same brightness as user's specification.

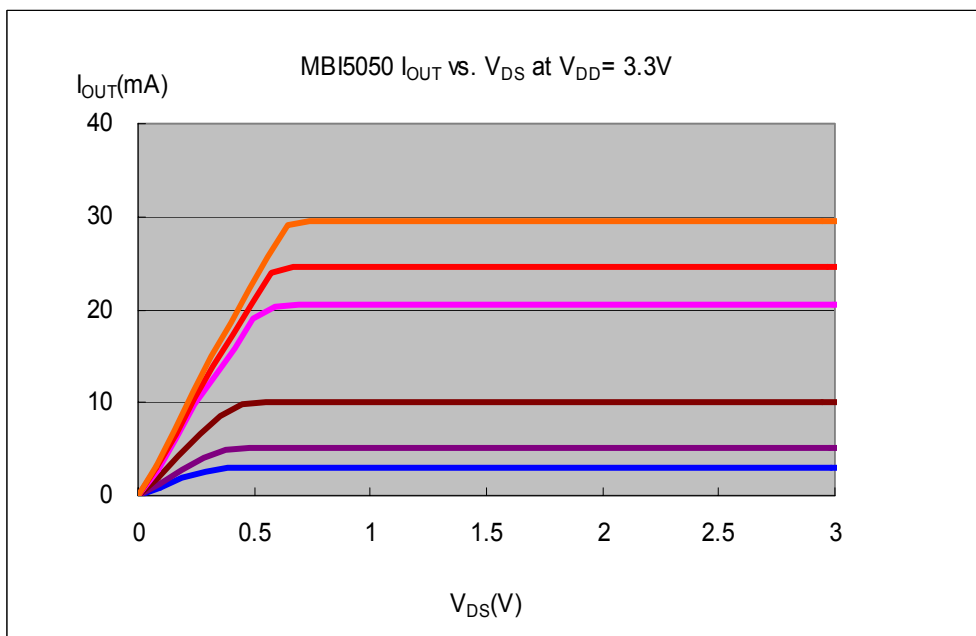
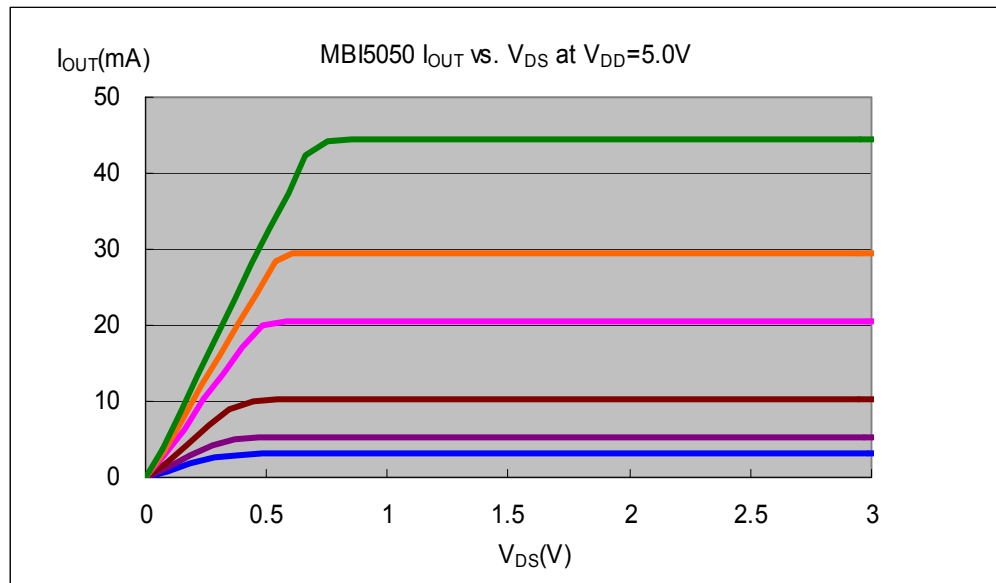
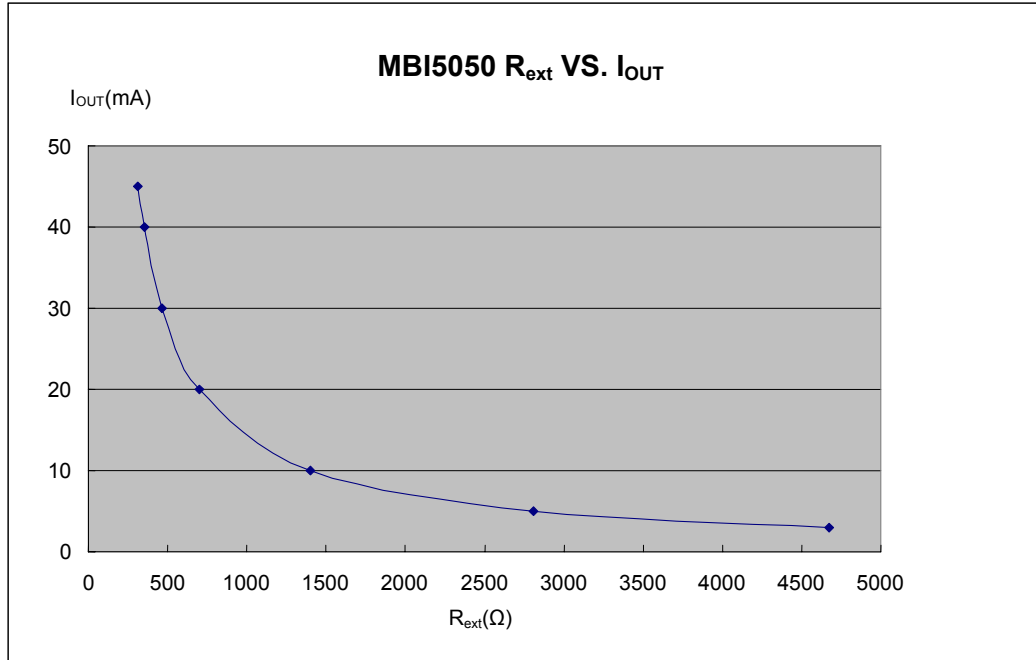


Figure 4

MBI5050**16-Channel PWM Constant Current LED Driver****For Time-multiplexing Applications****Setting Output Current**

The output current (I_{OUT}) is set by an external resistor, R_{EXT} . The default relationship between I_{OUT} and R_{EXT} is shown in the following figure.



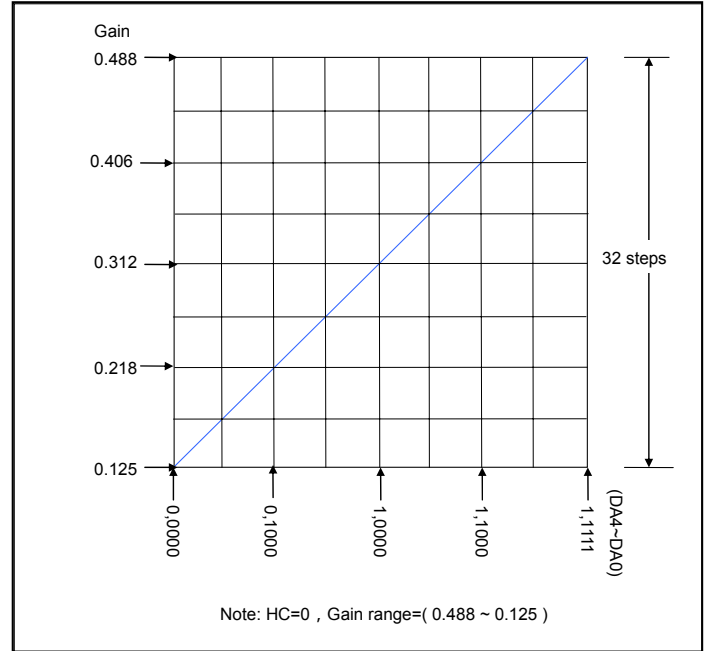
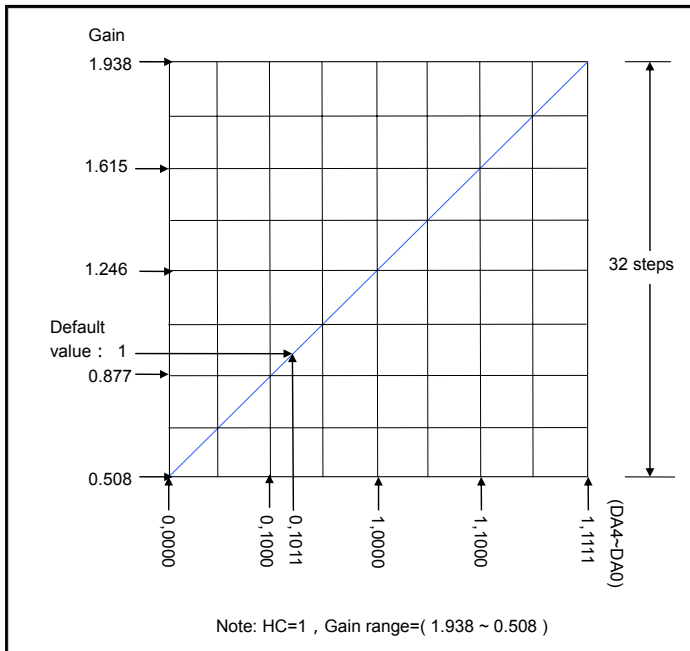
Also, the output current can be calculated from the equation:

$$V_{R-EXT} = 0.61 \text{ Volt} \times G \times H; I_{OUT} = V_{R-EXT} / (R_{EXT} \times H) \times 25.0$$

HC=1 \Rightarrow H=1 (Please refers to Current Gain Adjustment section for "HC" description)

HC=0 \Rightarrow H=4

Whereas R_{EXT} is the resistance of the external resistor connected to R-EXT terminal and V_{R-EXT} is its voltage. G is the digital current gain, which is set by the bit 9 ~ bit 2 of the configuration register. The default value of G is 1. For your information, the output current is about 20mA when $R_{EXT}=700\Omega$ if G is set to default value 1. The formula and setting for G are described in next section.

MBI5050**16-Channel PWM Constant Current LED Driver****For Time-multiplexing Applications****Current Gain Adjustment**

The 6 bits (bit 5~bit 0) of the configuration register set the gain of output current, i.e., G. As total 6-bit in number, i.e., ranging from 6'b000000 to 6'b111111, these bits allow user to set the output current gain up to 64 levels. These bits can be further defined inside configuration register as follows:

F	E	D	C	B	A	9	8	7	6	5	4	3	2	1	0
-	-	-	-	-	-	-	-	-	-	HC	DA4	DA3	DA2	DA1	DA0

1. Bit 5 is HC bit. The setting is in low current band when HC=0, and in high current band when HC=1.
2. Bit 4 to bit 0 are DA4 ~ DA0.

The relationship between these bits and current gain G is:

$$HC=1, D=(65 \times G - 33)/3$$

$$HC=0, D=(256 \times G - 32)/3$$

and D in the above decimal numeration can be converted to its equivalent in binary form by the following equation:

$$D = DA4 \times 2^4 + DA3 \times 2^3 + DA2 \times 2^2 + DA1 \times 2^1 + DA0 \times 2^0$$

In other words, these bits can be looked as a floating number with 1-bit exponent HC and 5-bit mantissa DA4~DA0.

For example,

$$HC=1, G=1.246, D=(65 \times 1.246 - 33)/3 = 16$$

the D in binary form would be:

$$D=16 = 1 \times 2^4 + 0 \times 2^3 + 0 \times 2^2 + 0 \times 2^1 + 0 \times 2^0$$

The 6 bits (bit 5~bit 0) of the configuration register are set to 6'b110000.

Staggered Delay of Output

MBI5050 has a built-in staggered circuit to perform delay mechanism. Among output ports exist a incremental 5ns delay time among $\overline{OUT4n}$, $\overline{OUT4n+1}$, $\overline{OUT4n+2}$, and $\overline{OUT4n+3}$, by which the output ports will be divided to four groups at a different time so that the instant current from the power line will be lowered.

MBI5050**16-Channel PWM Constant Current LED Driver****For Time-multiplexing Applications****Package Power Dissipation (PD)**

The maximum allowable package power dissipation is determined as $P_D(\max) = (T_j - T_a) / R_{th(j-a)}$. When 16 output channels are turned on simultaneously, the actual package power dissipation is

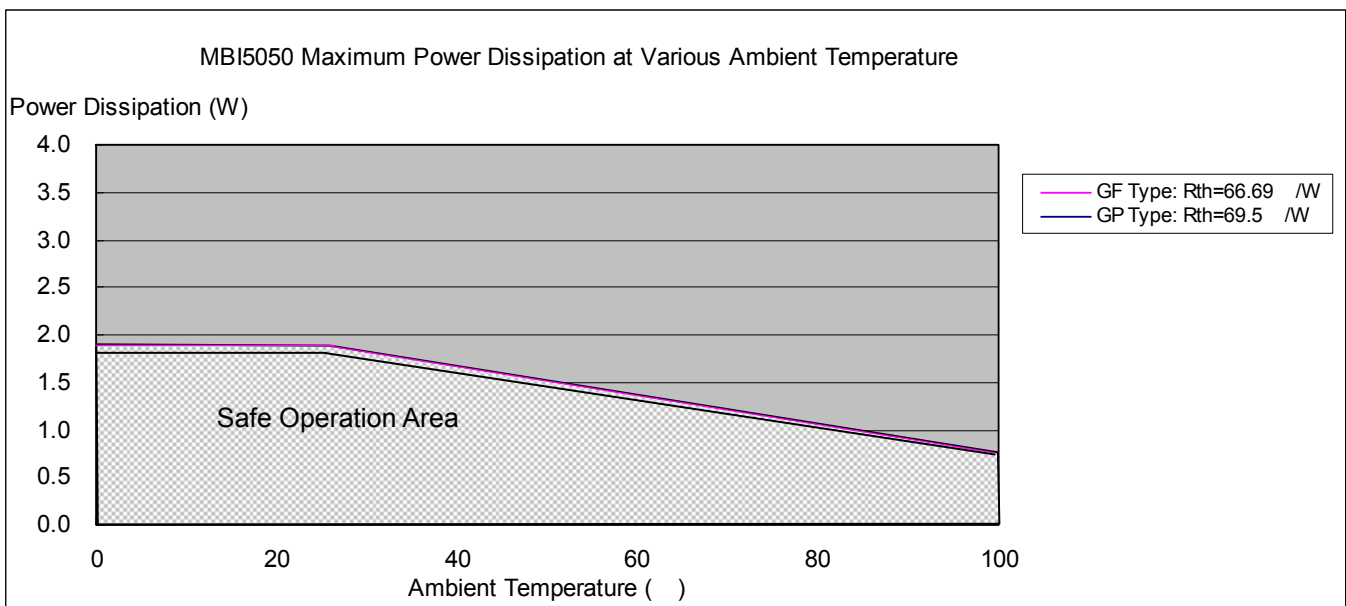
$P_D(\text{act}) = (I_{DD} \times V_{DD}) + (I_{OUT} \times \text{Duty} \times V_{DS} \times 16)$. Therefore, to keep $P_D(\text{act}) \leq P_D(\max)$, the allowable maximum output current as a function of duty cycle is:

$I_{OUT} = \{[(T_j - T_a) / R_{th(j-a)}] - (I_{DD} \times V_{DD})\} / V_{DS} / \text{Duty} / 16$, where $T_j = 150^\circ\text{C}$.

Please see the follow table for P_D and $R_{th(j-a)}$ for different packages:

Device Type	$R_{th(j-a)}$ ($^\circ\text{C}/\text{W}$)	P_D (W)
GF	66.69	1.87
GP	69.5	1.79

The maximum power dissipation, $P_D(\max) = (T_j - T_a) / R_{th(j-a)}$, decreases as the ambient temperature increases.



MBI5050 16-Channel PWM Constant Current LED Driver

For Time-multiplexing Applications

LED Supply Voltage (V_{LED})

MBI5050 is designed to operate with V_{DS} ranging from 0.4V to 1.0V (depending on $I_{OUT}=5\sim90mA$) considering the package power dissipating limits. V_{DS} may be higher enough to make $P_{D(act)} > P_{D(max)}$ when $V_{LED}=5V$ and $V_{DS}=V_{LED}-V_F$, in which V_{LED} is the load supply voltage. In this case, it is recommended to use the lowest possible supply voltage or to set an external voltage reducer, V_{DROP} .

A voltage reducer lets $V_{DS}=(V_{LED}-V_F)-V_{DROP}$.

Resistors or Zener diode can be used in the applications as shown in the following figures.

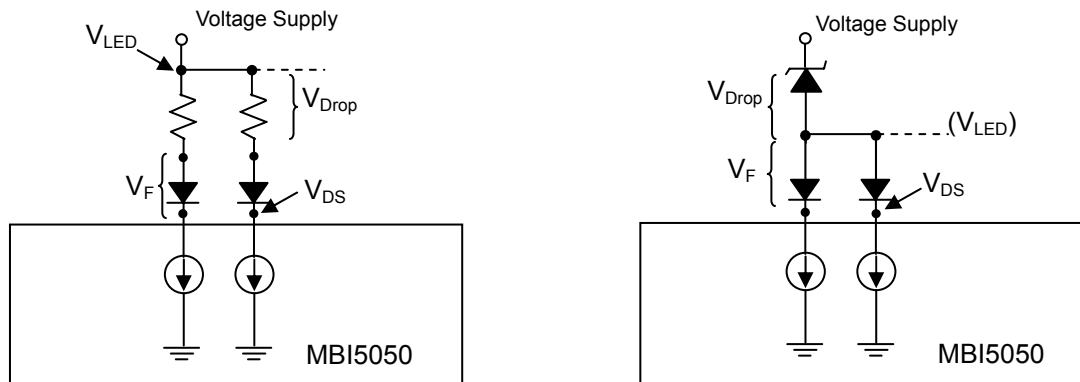


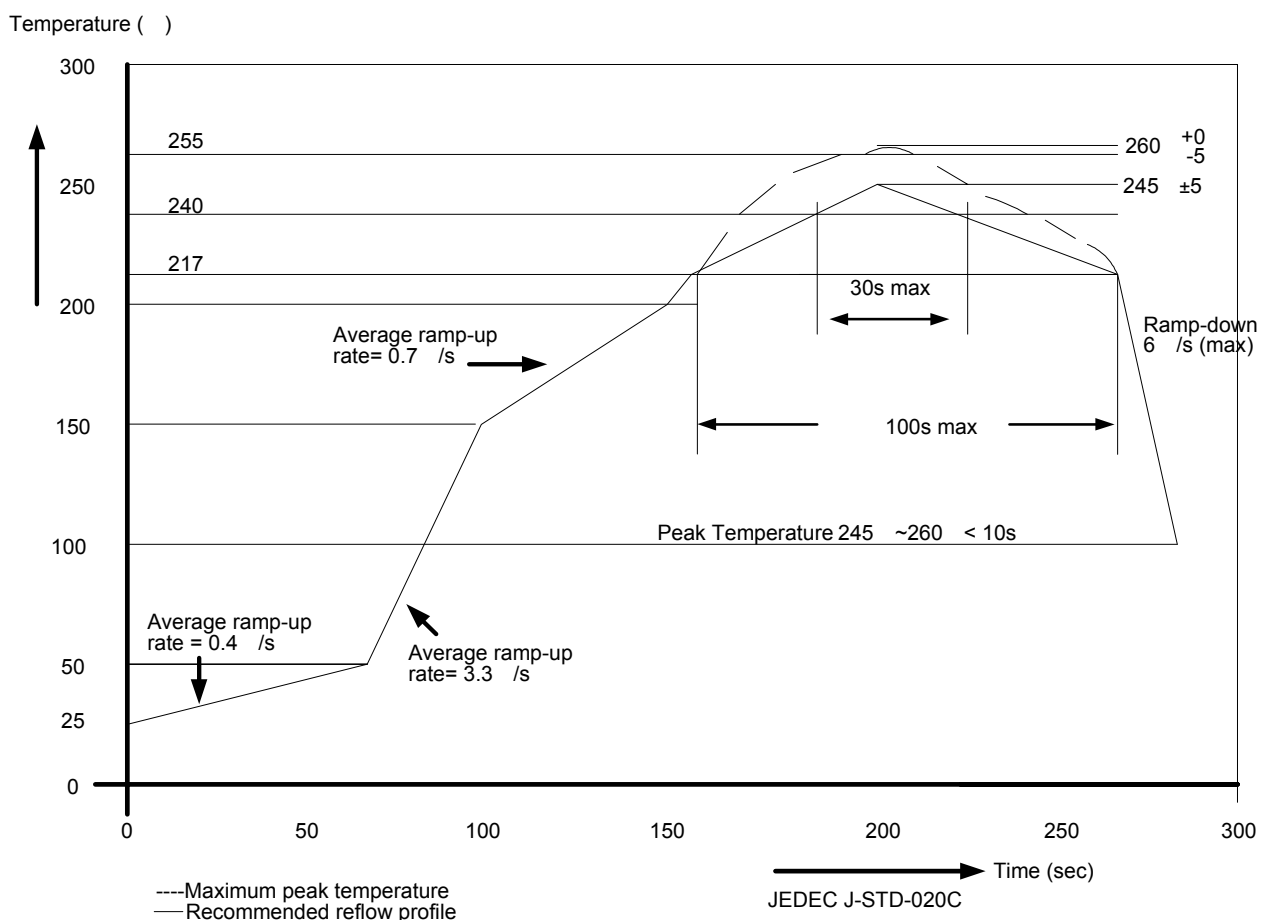
Figure 5

Switching Noise Reduction

LED drivers are frequently used in switch-mode applications which always behave with switching noise due to the parasitic inductance on PCB. To eliminate switching noise, refer to "Application Note for 8-bit and 16-bit LED Drivers- Overshoot".

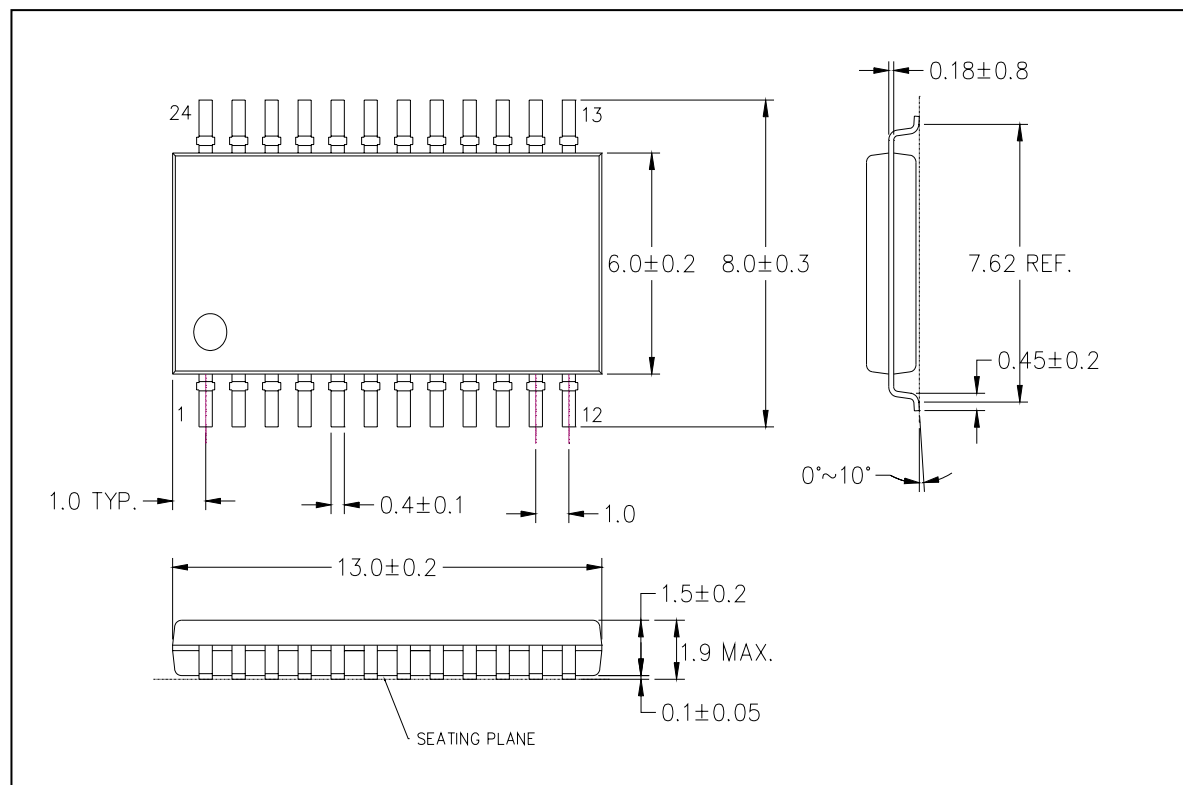
MBI5050**16-Channel PWM Constant Current LED Driver****For Time-multiplexing Applications****Soldering Process of "Pb-free" Package Plating***

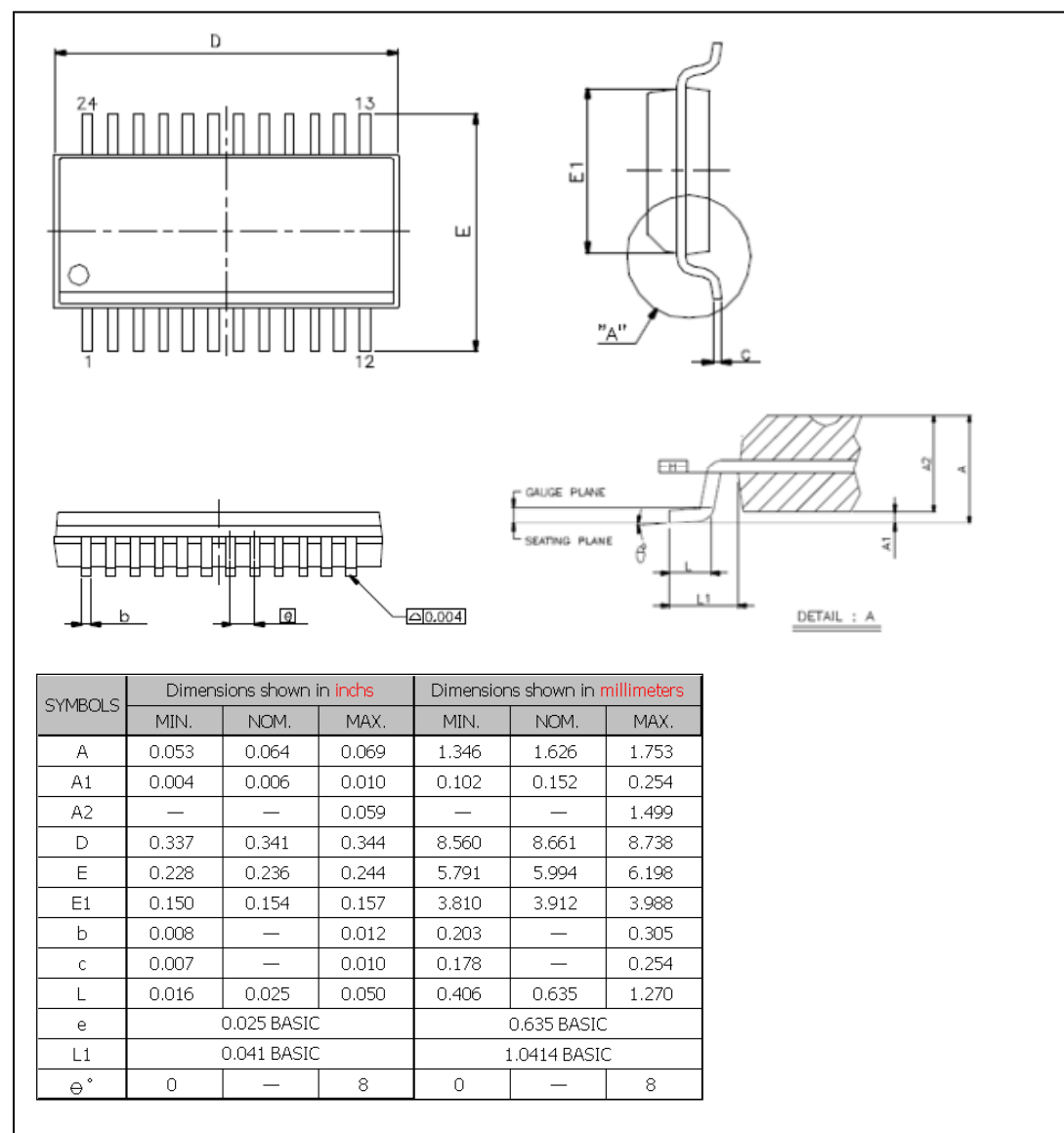
Macroblock has defined "Pb-Free" to mean semiconductor products that are compatible with the current RoHS requirements and selected 100% pure tin (Sn) to provide forward and backward compatibility with both the current industry-standard SnPb-based soldering processes and higher-temperature Pb-free processes. Pure tin is widely accepted by customers and suppliers of electronic devices in Europe, Asia and the US as the lead-free surface finish of choice to replace tin-lead. Also, it adopts tin/lead (SnPb) solder paste, and please refer to the JEDEC J-STD-020C for the temperature of solder bath. However, in the whole Pb-free soldering processes and materials, 100% pure tin (Sn) will all require from 245 °C to 260 °C for proper soldering on boards, referring to JEDEC J-STD-020C as shown below.



Package Thickness	Volume mm ³ <350	Volume mm ³ 350-2000	Volume mm ³ 2000
<1.6mm	260 +0 °C	260 +0 °C	260 +0 °C
1.6mm – 2.5mm	260 +0 °C	250 +0 °C	245 +0 °C
2.5mm	250 +0 °C	245 +0 °C	245 +0 °C

*Note: For details, please refer to Macroblock's "Policy on Pb-free & Green Package".

MBI5050**16-Channel PWM Constant Current LED Driver****For Time-multiplexing Applications****Package Outline****MBI5050 GF Outline Drawing**

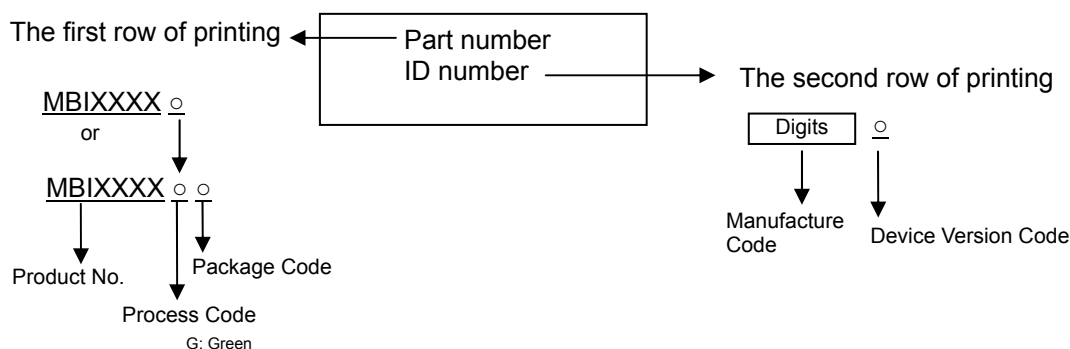
MBI5050**16-Channel PWM Constant Current LED Driver****For Time-multiplexing Applications****MBI5050 GP Outline Drawing**

Note: The unit for the outline drawing is mm.

MBI5050 16-Channel PWM Constant Current LED Driver

For Time-multiplexing Applications

Product Top Mark Information



Product Revision History

Datasheet version	Device Version Code
V1.00	A
V1.01	A
V1.02	A

Product Ordering Information

Part Number	"Pb-free & Green" Package Type	Weight (g)
MBI5050GF	SOP24-236-1.00	0.28
MBI5050GP	SSOP24-150-0.64	0.11

MBI5050**16-Channel PWM Constant Current LED Driver****For Time-multiplexing Applications****Disclaimer**

Macroblock reserves the right to make changes, corrections, modifications, and improvements to their products and documents or discontinue any product or service without notice. Customers are advised to consult their sales representative for the latest product information before ordering. All products are sold subject to the terms and conditions supplied at the time of order acknowledgement, including those pertaining to warranty, patent infringement, and limitation of liability.

Macroblock's products are not designed to be used as components in device intended to support or sustain life or in military applications. Use of Macroblock's products in components intended for surgical implant into the body, or other applications in which failure of Macroblock's products could create a situation where personal death or injury may occur, is not authorized without the express written approval of the Managing Director of Macroblock.

Macroblock will not be held liable for any damages or claims resulting from the use of its products in medical and military applications.

Related technologies applied to the product are protected by patents. All text, images, logos and information contained on this document is the intellectual property of Macroblock. Unauthorized reproduction, duplication, extraction, use or disclosure of the above mentioned intellectual property will be deemed as infringement.